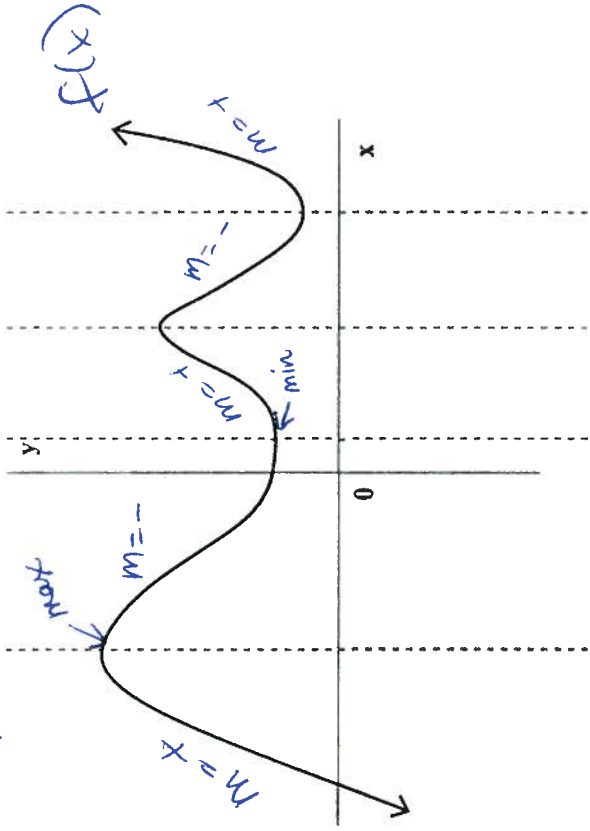
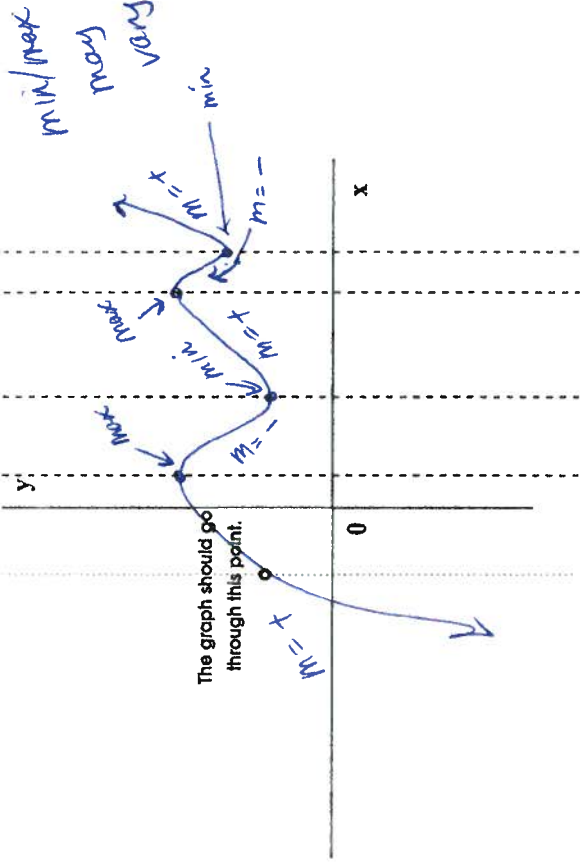
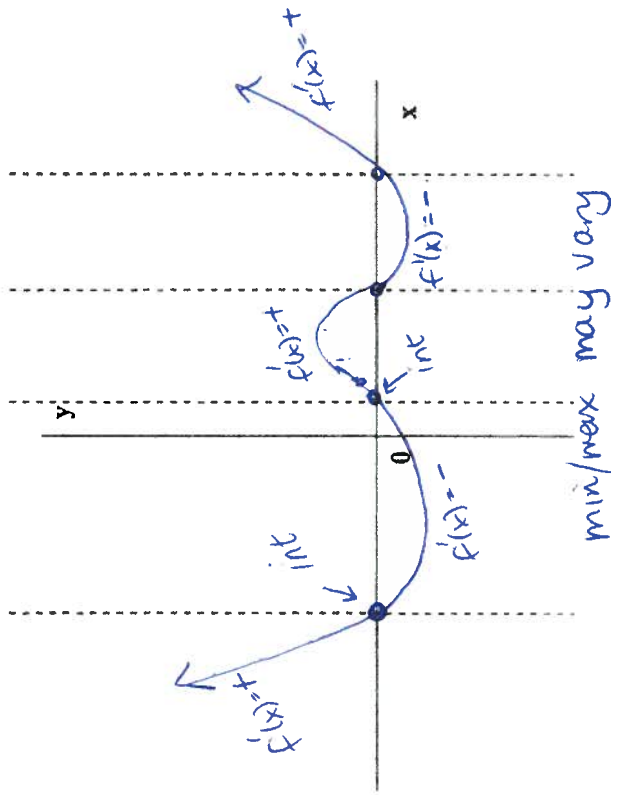


Section 7.6 Homework U Additional Notes

$m = \text{slope}$



The graph of $y = f(x)$ is sketched on the axes above. Use the axes below to sketch a possible graph of its derivative $y = f'(x)$



The graph of $y = g'(x)$, the derivative of $y = g(x)$, is sketched on the axes below. Sketch a possible graph of $y = g(x)$ on the axes above. The graph should pass through the point shown.

