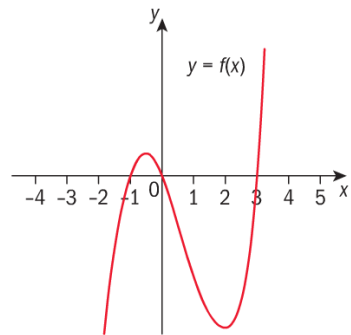


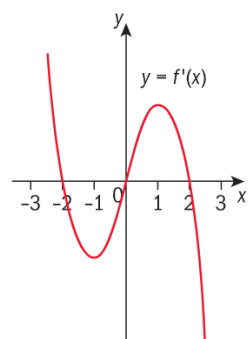
## Exercise 7U

### EXAM-STYLE QUESTIONS

- 1 The graph of  $y = f(x)$  is given.  
Sketch a graph of  $y = f'(x)$  and  $y = f''(x)$ .



- 2 The graph of the derivative of  $f$ ,  $y = f'(x)$ , is given.  
Sketch a graph of  $y = f(x)$  and  $y = f''(x)$ .



- 3 The graph of the second derivative of  $f$ ,  $y = f''(x)$ , is given. Sketch a graph of  $y = f(x)$  and  $y = f'(x)$ .

