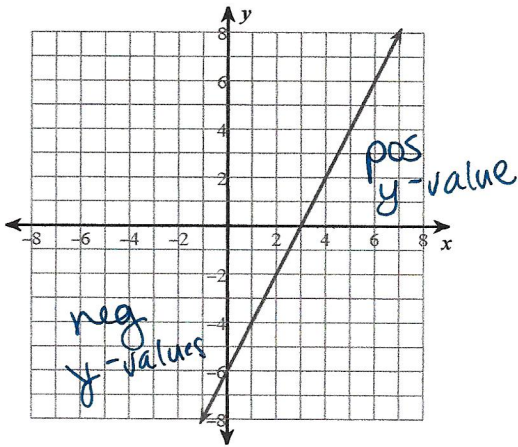


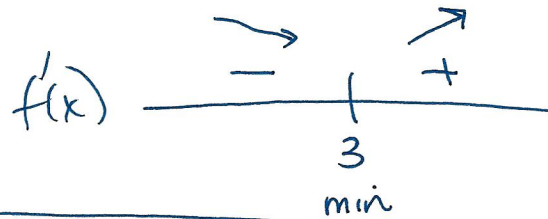
Curve Sketching Review

Given the graph of $f'(x)$, state where $f(x)$ has relative minimums or maximums.

1)

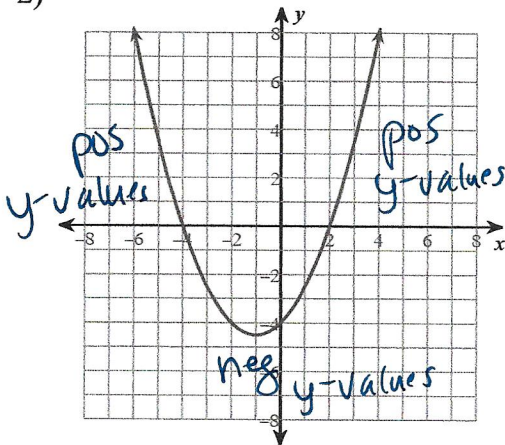


X-int: 3

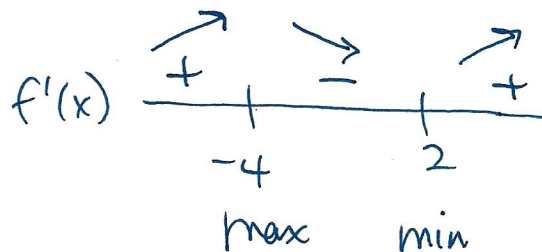


relative min at $x=3$

2)

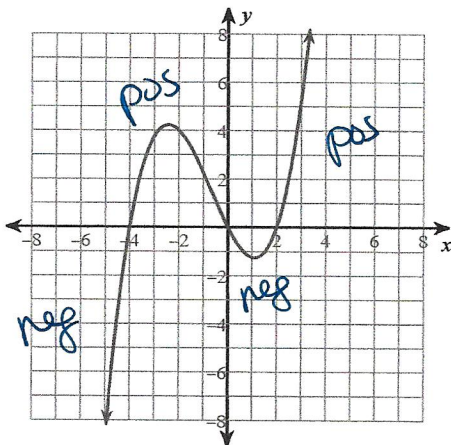


X-int: -4 and 2

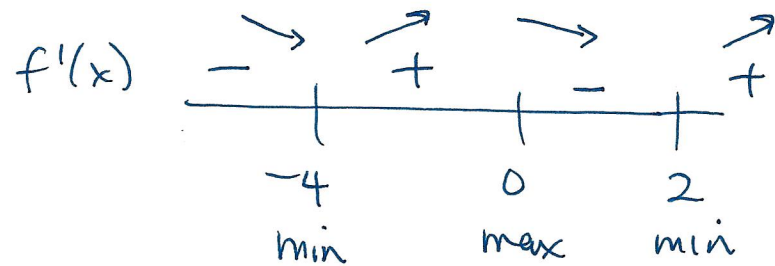


relative max at $x=-4$
relative min at $x=2$

3)



X-int: -4, 0, 2



relative min at $x=-4$ & $x=2$
relative max at $x=0$